


CPR-C Series

Curve-Front Candy Cases

Climate Controlled

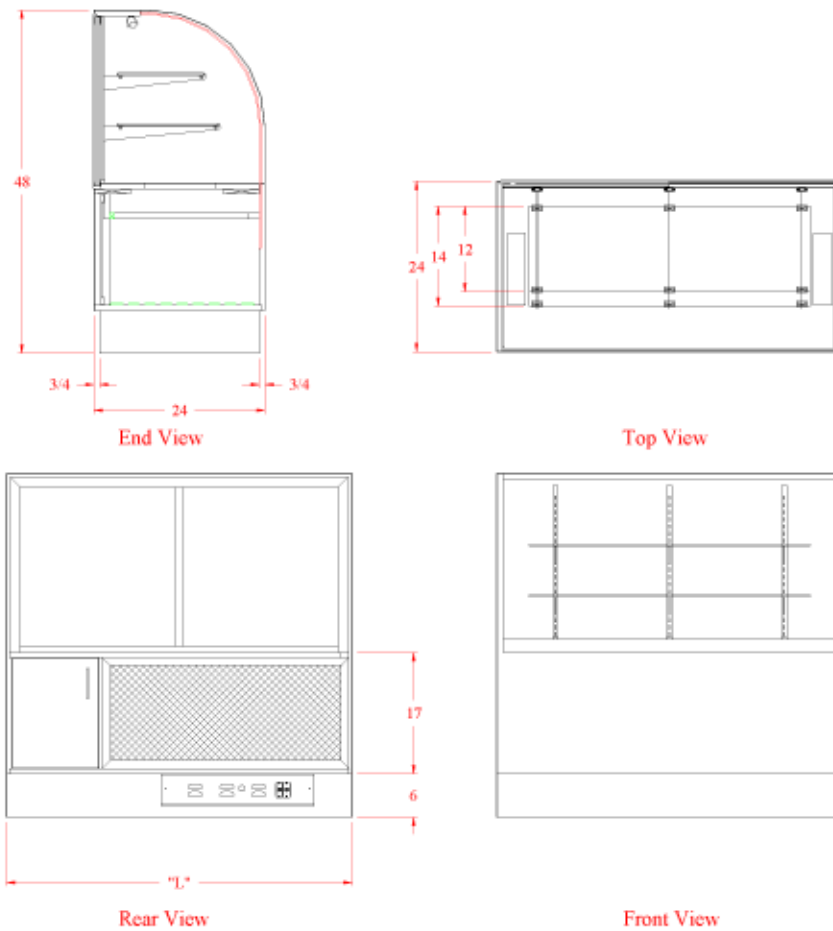


Features & Finishes:	
<ul style="list-style-type: none"> • Curved Glass Front • Aluminum Framed Sliding Mirror Doors • Tempered Glass Shelves (1-12", 1-14") • 6"H Black Kick • Standard HPL Exterior Finish • White HPL Deck • Top Light with Lamp and Shield • Climate Controlled Model Includes Self-Contained Condensing Unit • Climate Controlled Storage Area • Cord, Plug & Switch • "UL" Listed 	

CPR-C Series

Curve-Front Candy Cases

Climate Controlled



Note: 59" and 77" cases to have sliding doors.

Model No.	Dimensions: L X W X H	Rows of Shelves	Est. Crated Weight	Case Options:
CPR-4C	48 1/4" x 24" x 48"	2	480 lbs.	1. Brasstone Finish 2. Standard HPL Exterior Finish 3. 4-Yr. Extended Motor/Compressor Parts Warranty
CPR-5C	59 1/4" x 24" x 48"	2	550 lbs.	
CPR-6C	77 1/4" x 24" x 48"	2	620 lbs.	

