

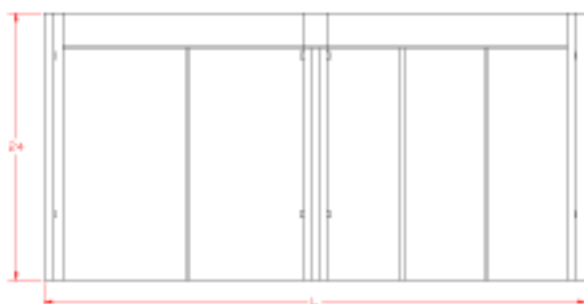
# 98400 Series Cash & Wrap Counters



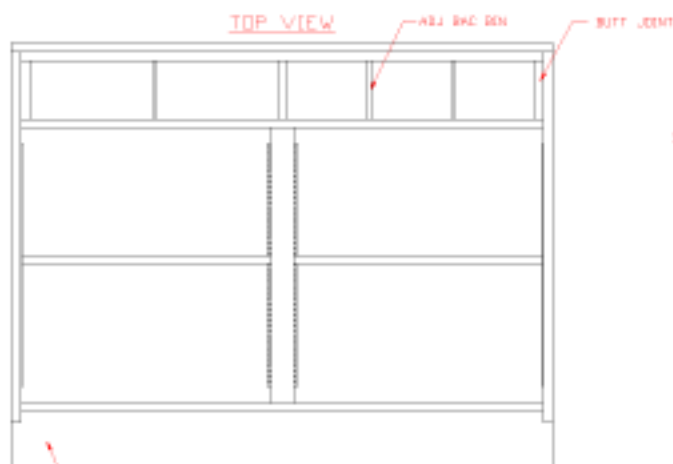
## Features & Finishes:

- White Leather HPL Counter Top
- White HPL Finish Exterior
- White Interior Storage
- 4" Black Kick
- Heavy Duty Protective Corners
- Adjustable Bag Bin(s)
- Adjustable Shelf

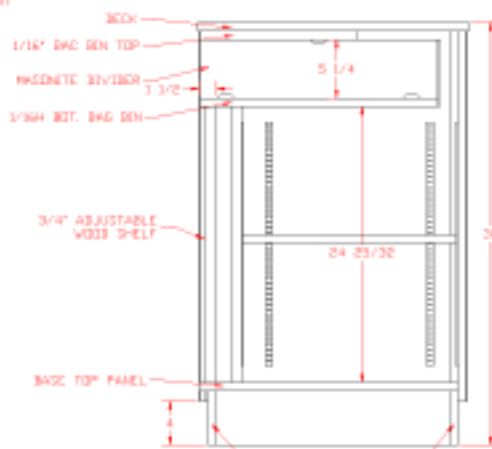
Model No.	Dimensions: L X W X H	Est. Crated Weight
98464	48" X 24" X 38"	245 lbs.
98465	60" X 24" X 38"	265 lbs.
98466	72" X 24" X 38"	305 lbs.
98467	84" X 24" X 38"	340 lbs.
98468	96" X 24" X 38"	380 lbs.



TOP VIEW



FRONT VIEW



SECTION VIEW



955 Turquoise Street  
San Diego, CA 92109

Local 1-858-539-7550  
Fax 1-858-539-0088  
Email: [info@triodisplay.com](mailto:info@triodisplay.com)

[www.triodisplay.com](http://www.triodisplay.com)