

# 97000-R Series

## Straight Front High Volume Refrigerated Display Cases



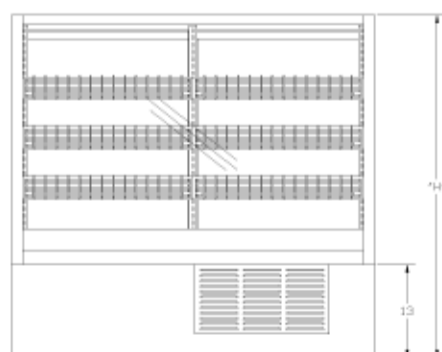
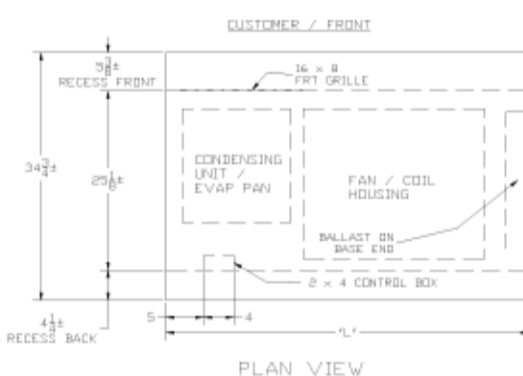
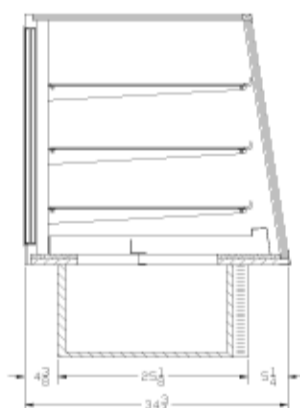
### Feature & Finishes:

- Tempered Insulated Glass Front & Top
- Insulated Glass Ends
- Framed, Sliding, Insulated Tempered Glass Doors
- Top Light & Shelf Lights with Lamps and Shields
- Heavy Duty Deck - White Finish
- Heavy Duty Steel Base - Black Finish
- White Wire Shelves (40" H-2)(48" H-3)
- Self-Contained Air Cooling Unit in Base
- Removable for Ease of Maintenance and Cleaning
- 120 Volts - 60 Cycle - Single Phase
- 1/2 HP - 12 Amps
- Automatic, Energy Saving, Condensate Evaporator
- 10' Cord, Plug & Switch
- U.L. & C.U.L. Listed
- "ETL" Sanitation Listed (Conforms to NSF STD-7)



# 97000-R Series

## Straight Front High Volume Refrigerated Display Cases



Model No.	Dimensions: L X W X H	Rows of Shelves	Est. Crated Weight	Case Options:
97040-48R	48" X 34 3/4" X 40"	2	690 lbs.	1. Mirror Ends 2. Mirror Doors 3. HPL Finish Cover Front and Ends (Standard HPL) 4. Brasstone, Black, or White (Frame & Lights only) 5. Self Closing Doors 6. Transparent Mirror Doors 7. 4 Yr Extended Motor/Compressor Parts Warranty
97040-59R	59" X 34 3/4" X 40"	2	710 lbs.	
97040-77R	77" X 34 3/4" X 40"	2	880 lbs.	
97048-48R	48" X 34 3/4" X 48"	3	700 lbs.	
97048-59R	59" X 34 3/4" X 48"	3	810 lbs.	
97048-77R	77" X 34 3/4" X 48"	3	900 lbs.	

Specifications Subject to change without notice

