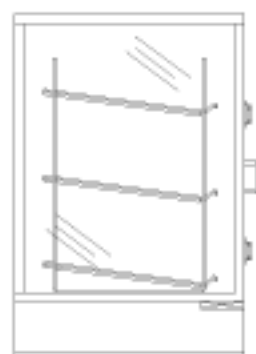


92500 Series

Donut/Pastry Merchandiser

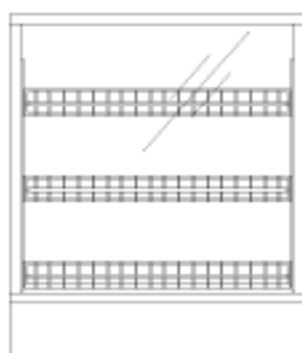


24" or 30"

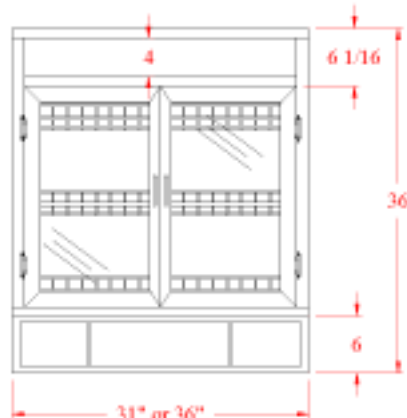
End View



Top View



Front View



Rear View

Features & Finishes:

- Anodized Aluminum Frame
- Glass Tops, Ends & Back
- Aluminum Framed, Tempered Glass & Hinged Door (s) (15" L-2) (29" L-1)
- White HPL Deck and Bag Bin
- White Wire Shelves (3)
- Top Acrylic Signage Panel (Text not included)

Model No.	Dimensions: L X D X H	Rows of Shelves	Est. Crated Weight	Case Options:
92531	31" x 24" x 36"	3	210 lbs.	1. "ETL" Sanitation Listed (Conforms to NSF STD-2) 2. Pass Thru (Doors Front & Rear) (Manual-Closing) 3. Self-Closing Doors 4. Full Height Doors 5. Mirror Ends 6. Mirror Back 7. Top Light with Lamp, Shield, Cord, Plug, & Switch 8. Text
92536	36" x 30" x 36"	3	230 lbs.	

TRIO
RETAIL DESIGN
& EQUIPMENT

955 Turquoise Street
San Diego, CA 92109

Local 1-858-539-7550
Fax 1-858-539-0088
Email: info@triodisplay.com

www.triodisplay.com